



PUMP GUARD

EL ES DE engineering has developed a new range of robust pump covers to meet safety and operational requirements of horizontal centrifugal slurry pumps. The covers are designed to fit the popular AH Series pumps manufactured by Warman.

The cover design incorporates a vertical seam and innovative fastening system to enable quick and easy installation or removal of the cover, maximising usability for maintenance and minimising down time without compromising safety.

Maintenance activities such as gland viewing, water injection port access and lubrication access are not inhibited when the guard is installed.

Features

The functional design integrates the following key features:

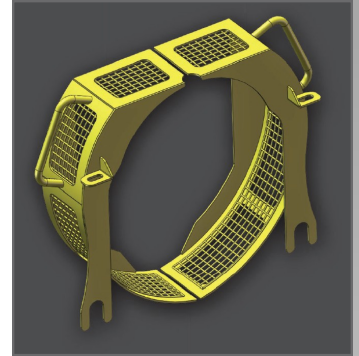
- Reduces the need to remove guard during regular maintenance
- Simple, cost effective and robust design
- Innovative profile to best match the contours of the pump and its base
- Minimal fasteners and unique design enables secure guard mounting yet quick and easy removal
- Lightweight, compact and ergonomic for ease of handling
- Accommodates for variations in water injection hose and lubrication arrangements
- Retains vibration analysis point access when cover is installed

- Large mesh area for viewing of gland and expulsion of leaked material
- For regular maintenance all parts are removed from the top, no need to reach under pump housing as is typically the case
- Hinged construction available on some models

Fitment Range

The covers fit Warman pump body sizes from 4/3 through to 12/14 in most instances with the ability to custom design for other models and different configurations.

Please contact us for further details of fitment options.



MATERIAL	FINISHING OPTIONS
250 Grade Mild Steel	Sandblast and Paint OR Hot dipped galvanised
304 Grade Stainless Steel	Pickled
316 Grade Stainless Steel	Pickled
5005/5083 Grade Aluminium	Anodised